



Blue Light Bubble Attack Standard Operating Procedures

Version	#2	
Issue Date	23/10/2023	
Review Date	06/11/2024	
Next Review	06/11/2025	
Revised By:	Dominic Crow	
Authorised By:	Brendon Crompton	

Purpose

This policy shows you the safe practice of using the Blue Light Bubble attack equipment. This policy needs to follow Blue Lights SMS. All staff and contractors need to follow this policy when using the Blue Lights Bubble Attack equipment. This is a “living document” and may be changed following new safe practice guidelines or new equipment standards.

Responsibilities

Blue Light Rock & Ropes

Scope

Participants use Blue Lights Bubble Attack equipment with the supervision of a Blue Light Instructor.

Location

Blue Light Youth Center, Papakura.
Blue Light Camp, Awhitu
Other locations that have been checked prior to using.

Instructor Competency

Blue light internal competency sign off. First aid certificate. Refer to Appendix (A).

Adult Helper Competency

Physically and mentally able to follow and do duties outlined in adult induction. Following all Green headings

Participant Competencies

Physically able to fit in the bubbles.



Technical Advisors

Internal TA: Dominic Crow - 0220326887

Ratios

Maximum of 12 students to one instructor
The required number of adult helpers and instructors may change due to participants, weather, and other factors.

Risk Management – 1st Que Card

Refer to Bubble attack AMP.

If the instructor feels the session is unsafe, they have full authority to call a halt to the activity.

This can be but not limited to:

- Weather: Heavy rain, High winds, and thunderstorms
- Refer to 30/30 rule- If you hear thunder within 30sec of seeing lightning we shut high ropes for 30min. 30min restarts after every time if this occurs again.
- Participants not listening or physically unable or medical issues
- Equipment or facilities unsafe

Call Lead instructor over if ever unsure

Personal Safety

Instructors/ Adult supervisor cannot participate unless another Adult is present

Blue Light staff responsibilities

- Blue Light staff will run Bubble Attack session or induct adult on session plan and emergency procedure
- Supply and continuously maintain all safety equipment for the running of Bubble Attack.
- Have a first aid certified person on site
- Lead Instructor or camp manager to have cell phone/radio communication to the instructor/inducted adult
- **Call a halt to the activity if conditions or facility become unsafe**

Adult Induction

- Cover emergency procedure
- Cover risk management
- Their responsibility during activity of following the SOP (all green headings & que cards)
- Pastoral care & group management
- Sign acknowledgment form

Instructor/Adult supervisor Positioning

Blue Light staff/Adult supervisor will be positioned to see all participants in the bubbles and on the side lines. Also close enough to whistle or call a halt to the session if needed.



Pre-Activity

- Lead instructor to assess weather and determine if activity can run
- Instructors running activity need to have read and understood signed the SOP and AMP & to ensure adult supervisor has signed acknowledgment form for running of the activity.
- The lead instructor needs to check group numbers and risk acknowledgment forms have been signed.
- Lead instructor and team will need to review groups medical information and create plans if less able participants need added help
- Lead instructor to make phone call check to emergency contact at base

Set Up

Complete a full equipment pre use check, refer to equipment section.

- Set cones for out of bounds.
- Inflate Bubbles

If you are unsure of anything consult with lead instructor

Make sure instructors have:

- Closed toe shoes
- Cell phone
- Appropriate clothing for weather
- First Aid Kit

Make sure participants and adult helpers have:

- Closed toe shoes
- Appropriate clothing for weather
- Personal medication

Brief to Group

Introduction to self and activity

- Rotation end time
- Explain challenge by choice

Rules and safety

- Closest available instructor whereabouts if needed in case of an emergency (if adult helper is not present)
- No hitting when the person is not on their feet
- No hitting from behind
- If you don't want to be hit remove yourself from coned area
- Shoulder straps on and always holding the handles
- No hitting people out of a bubble

How to get in and out of the bubble

- Slot arms through shoulder straps and grab the handles
- Wiggle until bubble is over your torso
- From a kneeling position stand up one leg at a time

Adult Brief (if adult present)

Cover emergency procedure if instructor/ is incapacitated to retrieve/call the closest or designated staff member (whereabouts will be given to adult helper on the day)

To remove the rest of the students to safe place (whereabouts will be given to adult helper on the day) until



staff member can take them back to base.

Responsibilities during activity:

- Pastoral care
- Assistance to monitor students

Reinforcing boundaries or other guidelines the instructor may put in place

Running Activity

- Allow everyone to get into bubbles
- Explain the game of choice being played
- Ensure everyone is following the rules
- Through session manage all participants stay in coned area

At any time if instructor feels like the session is unsafe, they can call a halt to the session

Pack down and post activity

- Bubbles are packed away
- Any equipment issues or issues that arise on session are written on a debrief sheet and given to program co coordinator
- Any incident recorded on Auditiz
- De brief with team or if unable fill de brief form online

Equipment

Equipment	Pre-Use Inspection
Bubbles	Ensure they have no cracks, holes and are inflated. Ensure all handles and shoulder straps are in working order and no cuts in the straps.

Facilities

Facilities	Pre-Use Inspection
Grounds	Nothing sharp on the playing grounds and no trip hazards.

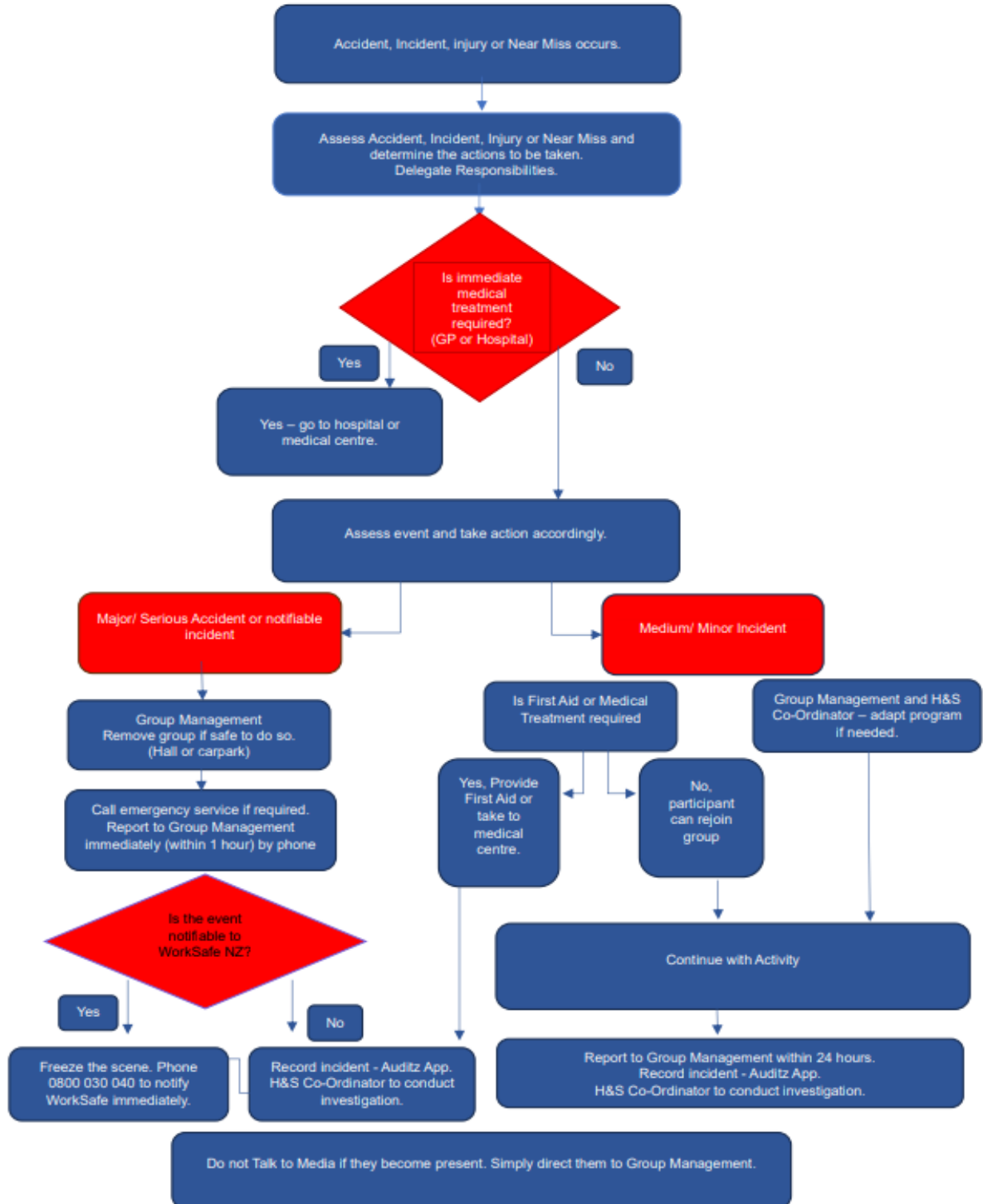
3 Monthly Inspections – Completed by Programme Coordinator – Recorded in database.

Equipment	3 Month Inspection
Bubbles	Ensure they have no cracks, holes and stay inflated overnight. Ensure all handles and shoulder straps are in working order and no cuts in the straps.

Appendix B Emergency Response Plan



INCIDENT REPORTING PROCEDURE





Employee / Adult Helper Declaration

The Safe Operating Procedure for **Bubble Attack** have been covered in this session and I have been given the opportunity to ask questions and review the information provided. I fully understand the procedures and agree to comply with them.

Employee Name	Signature	Date